

UXBRIDGE LIBRARY - RELOCATION TO THE CIVIC CENTRE



Introduction

Uxbridge Library Relocation

Hillingdon Council is looking to relocate Uxbridge Library to the council's Civic Centre.

The library is one of the borough's three flagship libraries, and the council is committed to improving the visitor experience, upgrading its facilities, and making them more accessible and safer, on a single level, whilst maintaining a close proximity to the current library location. It will only be a 300 metres walk along the High Street from its current location and located within the Civic Centre building and accessible either by steps or ramp and clearly signposted from the main reception.

The proposed relocation will create a new dedicated library space with improved facilities and disabled access, and a new reception area with café space with ample seating as part of an overall improvement programme at the Civic Centre.

The new library will offer a large book collection, an enclosed dedicated children's area, study booth areas, a learning centre, an exhibition space and free-to-use computers, along with printing and photocopying facilities.

The library's Tovertafel, which projects interactive games to encourage and engage play for people living with dementia and neurodiverse learning difficulties, will remain an important feature of this branch and will occupy a prominent and dedicated space.

A multi-purpose space which can be closed off and used for activities, as well as a meeting room available for community hire, will also be created.

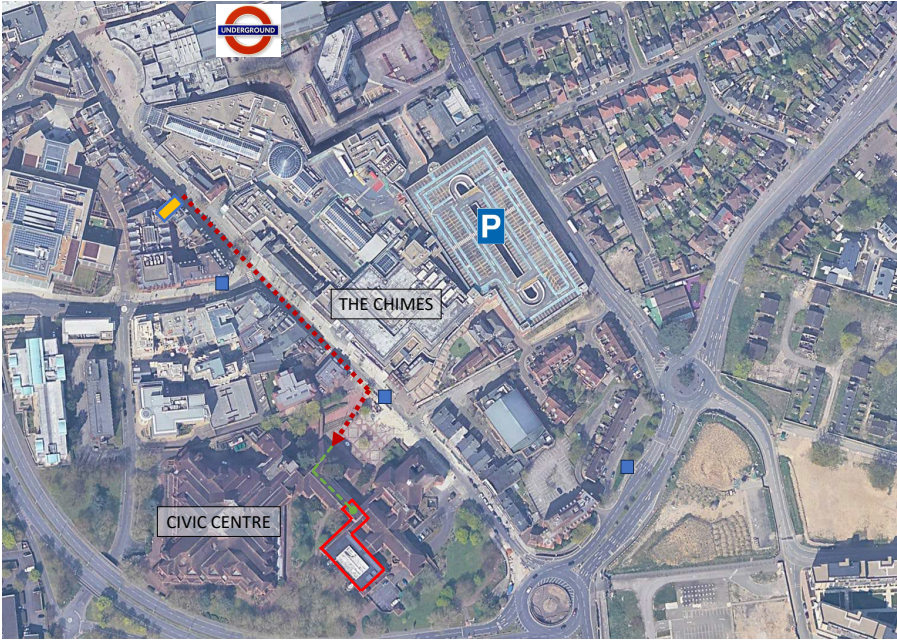
The new Library along with Uxbridge Family Hub and Uxbridge Adult Education Centre which have been already successfully relocated to the Civic Centre will make this a community hub for residents.

The current Library building, which was opened in 1987, has the third highest carbon footprint of all the council's buildings with a lot of underused spaces which the council is committed to improve on.

The key library relocation objectives include:

- ❑ maintaining, improving and enhancing the facilities and providing an outstanding experience for visitors within a new space fit for the 21st Century.
- ❑ ensuring the new space is more accessible for people of all ages and abilities, on a single level and safer to exit in case of emergency.
- ❑ ensuring the new library space is still highly accessible by transport and within a short walking distance of the current building in the popular Uxbridge High Street.
- ❑ ensuring the council meets its sustainability and net zero carbon reduction targets of 2030 by re-evaluating its assets with high carbon footprints and underused spaces.
- ❑ creating a community hub by relocating a number of the Council's services into the Civic Centre so it can continue to provide services in a more efficient and innovative ways.
- ❑ streamlining and re-evaluating the use of spaces within the Civic Centre, modernising and improving its facilities and ensuring this important historical building retains its significance in the wider community and is future proofed for visitors and staff alike.

UXBRIDGE LIBRARY - RELOCATION TO THE CIVIC CENTRE



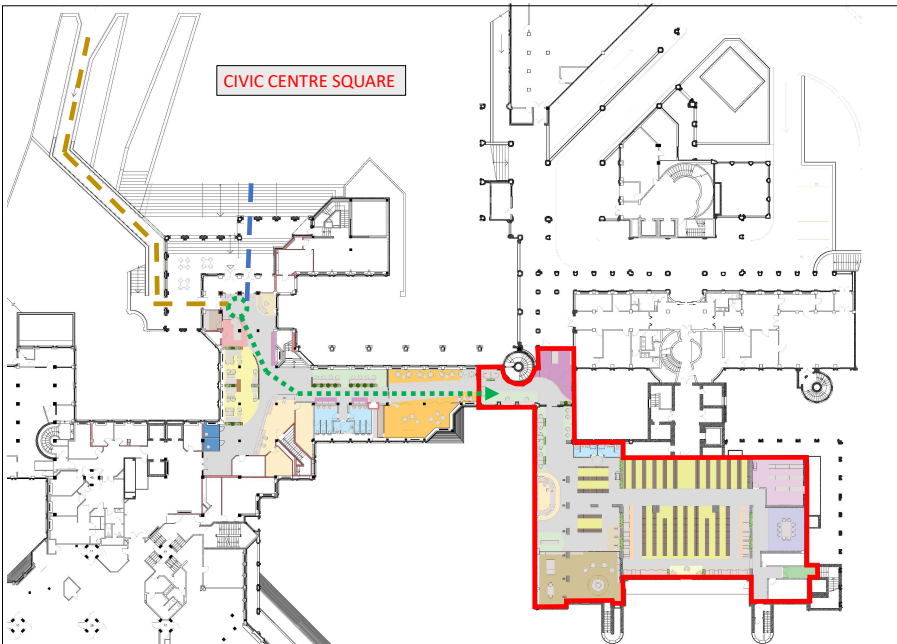
UXBRIDGE TOWN CENTRE AERIAL VIEW

The relocated Uxbridge Library will be a 3 - 5-minute walk from the current location, approximately 300 metres, along Uxbridge High Street. It will still be highly accessible from Uxbridge Underground station and Bus stops U (on the High Street) and T (on Vine Street) as well as the Park Road bus stop.

Stops U and T serve 6 routes namely 427, N207, U1, U3, U4 and U7 and Park Road stop serves the A10 and SL8.

A number of multi-storey car parks, notably The Chimes and Grainges are within a 5-10 min walk from the Civic Centre and accessible to the public within library opening hours.

	CURRENT UXBRIDGE LIBRARY LOCATION
	NEW UXBRIDGE LIBRARY LOCATION
	PEDESTRIAN ROUTE
	SURROUNDING BUS STOPS
	UXBRIDGE STATION
	CAR PARK



NEW UXBRIDGE LIBRARY APPROACH ROUTE

The new library will be on a single level, accessed by a stepped and ramped route. Single level provision ensures the facilities are equally accessible by all and the space is quicker and safer to exit in the event of an emergency.

The route from the entrance foyer to the new library will be clearly signposted and on one level. The reception area itself will also undergo an upgrade to provide a café space with break-out seating, new accessible toilet facilities, new reception facilities and a multi-purpose space which can be screened off depending on the occasion.

Laptop charging facilities will also attract business people and students alike as well as visitors making the space more inclusive.

	NEW UXBRIDGE LIBRARY EXTENT
	STEPPED APPROACH
	STEP FREE APPROACH
	ROUTE THROUGH RECEPTION AREA



CIVIC CENTRE STEPPED APPROACH

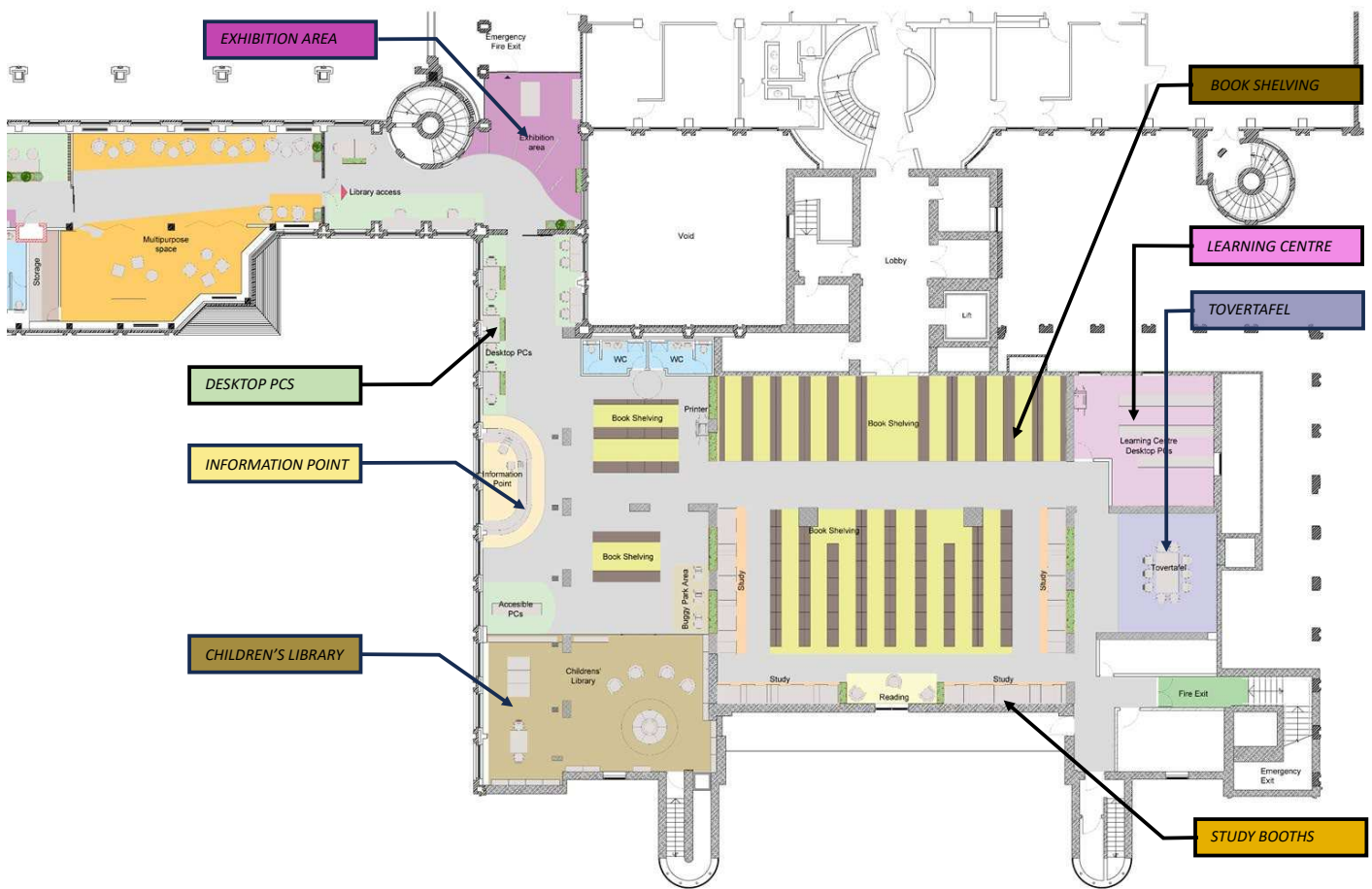


CIVIC CENTRE RAMPED APPROACH



CIVIC CENTRE FOYER

UXBRIDGE LIBRARY - RELOCATION TO THE CIVIC CENTRE



NEW UXBRIDGE LIBRARY PROPOSED FLOOR PLAN



1.0 MAIN ENTRANCE RECEPTION AREA

LARGE BOOK COLLECTION

The new Library will retain a large number of its most popular book stock.

CHILDREN'S LIBRARY

An enclosed dedicated space to promote children's growth and create a destination for young families

LEARNING CENTRE

A room to assist students and residents in the pursuit of learning and research

EXHIBITION SPACE

An area to promote local events, services and art

STUDY BOOTHS

Individual study areas with electronic charging facilities

TOVERTAFEL

An interactive light game table for people living with dementia and their carers

DESKTOP PCS

Free online access for residents for leisure, study and research

PHOTOCOPIER AND PRINTER FACILITIES

For community use

TOILET AND BABY CHANGING FACILITIES

Fully inclusive access and facilities for all

UXBRIDGE LIBRARY - RELOCATION TO THE CIVIC CENTRE

NEW LIBRARY ARTIST'S IMPRESSIONS



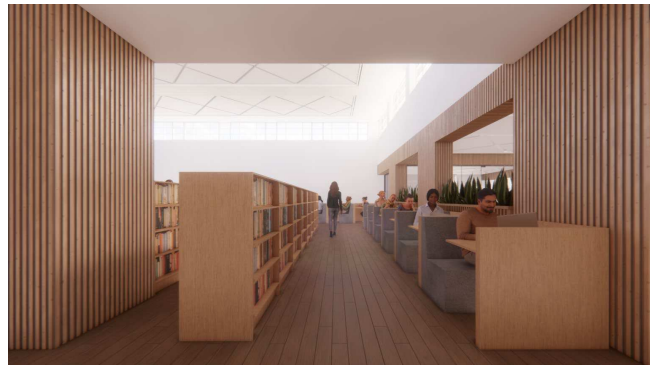
2.0 INFORMATION POINT VIEW



3.0 READING AREA VIEW



4.0 CHILDREN'S LIBRARY AREA VIEW



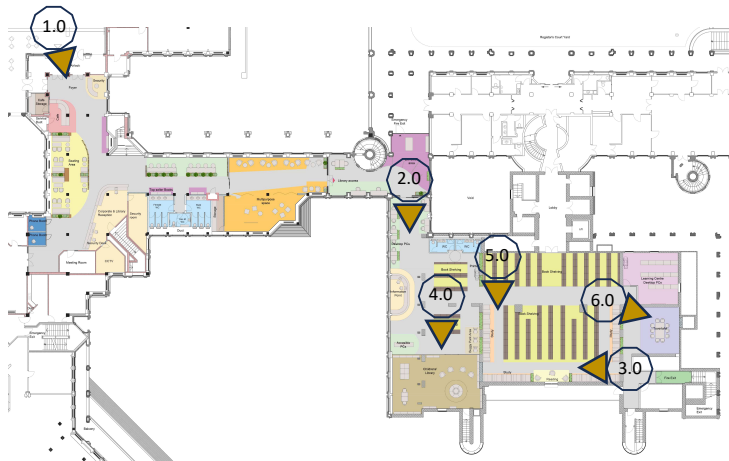
5.0 STUDY BOOTHS AREA VIEW

A homogenous design philosophy will apply from the refurbished entrance area to the new library space making the route through a pleasant and inviting experience. The new café space with its break-out seating area, will provide an additional space for visitors to use and become a more enticing destination for a wider range of people to visit and spend time in.

Indoor planting, use of timber panelling and screening, soft furnishings as well as contemporary feature painted walls and acoustic ceiling panels with contemporary lighting will create a modern, calming space for the wider community to enjoy.



6.0 TOVERTAFEL VIEW



VIEWS KEY PLAN